



## Preface

### A one stop solution for your Energy monitoring and Management needs

VRTEX Solutions Pvt. Ltd, a subsidiary under Pristine Embed Technologies Inc., USA, developed a unique solution addressing the ever increasing demands of Energy monitoring & Management Industry. This novel solution transforms various demands from different industries into unified requirements and provides a unique solution that monitors your system 24/7 and provides analytics for an excellent management. In addition, the solution can be employed to any horizontal or vertical industry in a unified way.



## About VRTEX Solutions Pvt. Ltd

VRTEX Solutions PVT Ltd, a subsidiary under Pristine Embed Technologies Inc., USA, is a renowned product developer in the field of enterprise class applications in the areas of automation, inventory tracking, and utility management. Our expertise and decades old experience is unmatched. We offer new cost cutting solutions in the dynamically shifting and competitive marketplace. Our solutions place the best, qualified talents on the job, on time and on budget. We offer value added solutions that match corporate goals.



### VRTEX Solutions Pvt. Ltd

*(A subsidiary of Pristine Embed Technologies)*

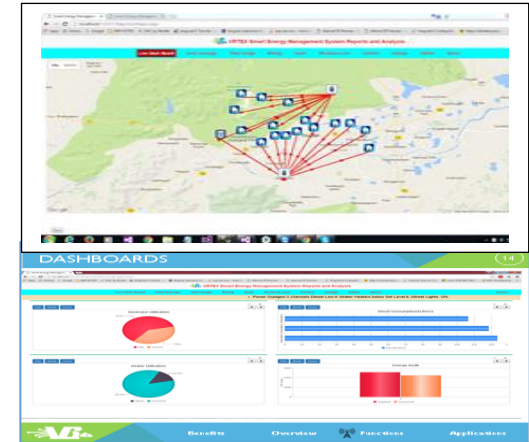
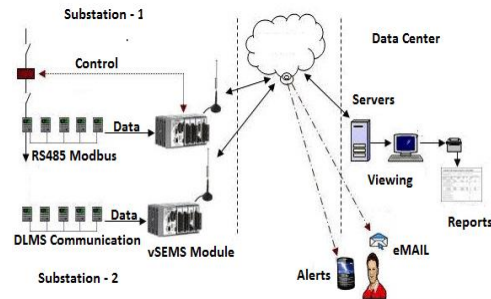
Regd. Office: FLAT 2B, AR ELEGANCE,  
2-2-647/77/G23 & 24,  
BAGH AMBERPET  
HYDERABAD - 500013

# VRTEX Solutions



## VRTEX Solutions Pvt. Ltd

*A subsidiary of  
Pristine Embed Technologies  
USA*



# VRTEX Smart Energy Management System

## Q&A

### Unique Features:

- Unique way of configuring the system where everything is drag and drop
- Visualize the configuration graphically as you are configuring
- Install the system with minimal data collection parameters and add/delete parameters later
- Adding/deleting parameters is easy and can be on demand
- Variable data collection frequencies at parameter level; making it possible to collect some parameters at higher rate
- Dead band based data collection to minimize database requirements
- Same application can be used to collect data from multiple utilities
- No more cumbersome Configurations

### Key Advantages:

- **Simplified System Planning** where you can add parameters to be collected as required
- Can start with a small configuration and with few parameters and have a feel for the system; means **less system cost** to begin with
- **Highly Scalable system.** Adding/deleting new items or parameters is a simple click & drag
- **Crisp algorithm** for data collection and transportation to minimize the system bandwidth and database requirements
- No need to change the existing meters as our system supports **multiple interfaces**
- Our system can be used as a **diagnostic tool** to capture additional data for study/debug and turn off the collection after study/debug

### How much does this system cost?

The system price will be based on client requirements. You will benefit from our scalable configuration and save time from easy set up.

### How long does set up take?

Depends on the customer system requirements. You can start with minimal configuration (as few as one unit) and with few parameters to begin with, then scale up as required later. All you need is: configuration requirements in mind; connect our interface modules to meter; open the configurator, and deploy.

### Where do I contact for more info?

Please contact us at +91 98485-53097 or email at [ramk@vrtexsolutions.in](mailto:ramk@vrtexsolutions.in)